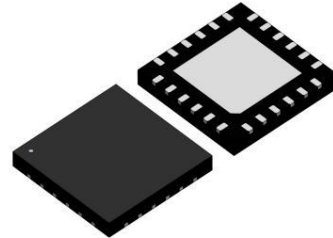


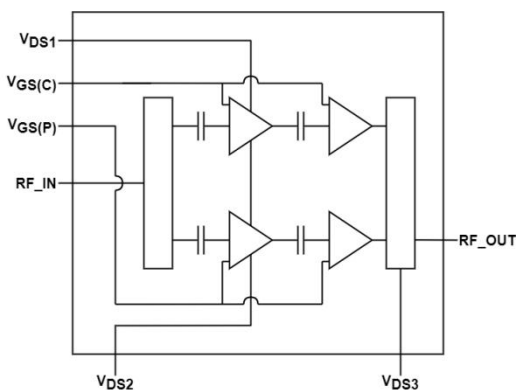
Description

The H9G2324M10Q is a LDMOS integrated Asymmetrical Doherty 2-stage Power Amplifier designed for cellular base station applications with 1.26 W average output power covering frequency range from 2.3 to 2.4 GHz.



QFN 6 x 6 x 0.85 mm, 24-pins

Block Diagram



Features

- Operating Frequency Range: 2.3 to 2.4 GHz
- Operating Drain Voltage: +28V
- P3dB: 12.5W (+41 dBm)
- 50 Ω Input matched
- Integrated Input Divider
- High Efficiency
- High Gain over the Frequency Range
- Footprint: QFN 6 x 6 x 0.85 mm, 24-pin

Applications

- 3GPP 5G NR FR1 n40 and 4G/LTE band B40.
- Power Amplifier for Small cells.
- Driver Amplifier for micro and macro base stations.
- Active antenna array for 5G mMIMO.
- Repeaters/DAS.

Order Information

Part Number	Description
H9G2324M10Q	Reel Package
H9G2324M10Q EVB	2.3 - 2.4GHz EVB

Typical Performances

RF Characteristics (Pulsed CW)

Freq(MHz)	P3dB(dBm)	Gain(dB)*	Eff(%)*	IRL(dB)*
2300	40.9	27.6	48.3	-11.2
2350	41.0	27.7	48.7	-11.8
2400	41.0	27.4	47.4	-12.3

Test conditions unless otherwise noted: 25°C, 10% Pulse, Vds = 28 V, Idq_carr = 27 mA, Vgs_peak = Vgs_carr - 0.6 V, test on Watech Application Board.

* @Pout=31dBm

RF Characteristics (WCDMA)

Freq(MHz)	Gain(dB)	Eff(%)	ACPR_5MHz(dBc)*	ACPR_10MHz(dBc)*
2300	26.5	43.5	-26.2	-39.6
2350	26.6	44.2	-26.3	-40.1
2400	26.4	43.3	-27.7	-40.5

Test conditions unless otherwise noted: 25°C, Vds = 28 V, Idq_carr = 27 mA, Vgs_peak = Vgs_carr - 0.6 V, Pavg = 31 dBm, 1C-WCDMA 5MHz Signal, 9.9 dB PAR @ 0.01% CCDF, test on WATECH Application Board.

*Uncorrected DPD

Absolute Maximum Ratings

Parameter	Range/Value	Units
Drain voltage (VDSS)	-0.5 to 65	V
Gate voltage (VGS)	-5 to 10	V
Storage Temperature (TSTG)	-55 to 150	°C
Case Temperature (TC)	-40 to 125	°C
Junction Temperature (TJ)	-40 to 175	°C

Electrical Specification

DC Characteristics

Parameter	Conditions	Min	Typ	Max	Unit
Breakdown Voltage V(BR)DSS	Vgs=0V, Ids=12.02 uA	65	-	-	V
Gate-Source Threshold Voltage of Carrier VGS(th)_C	Vds=28V, Ids=2.5uA	1.2	-	2.0	V
Gate-Source Threshold Voltage of Peak VGS(th)_P	Vgs=28V, Ids=9.52uA	1.2	-	2.0	V
Drain Leakage Current IDSS	Vgs=0V, Vds=28V	-	-	2.0	uA
Gate Leakage Current IGSS	Vgs=10V, Vds=0V	-	-	2.1	uA

Test conditions unless otherwise noted: 25 °C

RF Characteristics (Pulsed CW)

Parameter	Conditions	Min	Typ	Max	Unit
Frequency Range	Pout=31dBm	2.3	/	2.4	GHz
P3dB	Freq=2.4GHz	39.5	41.0	41.5	dBm

Test conditions unless otherwise noted: 25°C, 10% Pulse, Vds = 28 V, Idq_carr = 27 mA, Vgs_peak = Vgs_carr - 0.6 V, test on WATECH Production Board.

RF Characteristics (WCDMA)

Parameter	Conditions	Min	Typ.	Max	Unit
Frequency Range	Pout=31dBm	2.3	/	2.4	GHz
Gain	Freq=2.4GHz, Pout=31dBm	25.0	26.5	28	dB
Eff	Freq=2.4GHz, Pout=31dBm	40.5	43.5	/	%
IRL	Freq=2.4GHz, Pout=31dBm	/	/	-8	dB
ACPR@5MHz	Freq=2.4GHz, Pout=31dBm	/	-28.0	-24.0	dBc

Test conditions unless otherwise noted: 25°C, Vds = 28 V, Idq_carr = 27 mA, Vgs_peak = Vgs_carr - 0.6 V, Pave = 31 dBm, 1C-WCDMA 5MHz Signal, 9.9 dB PAR @ 0.01% CCDF test on WATECH Production Board.

*Uncorrected DPD



H9G2324M10Q
10W, 2.3-2.4 GHz Doherty Amplifier
Product Datasheet

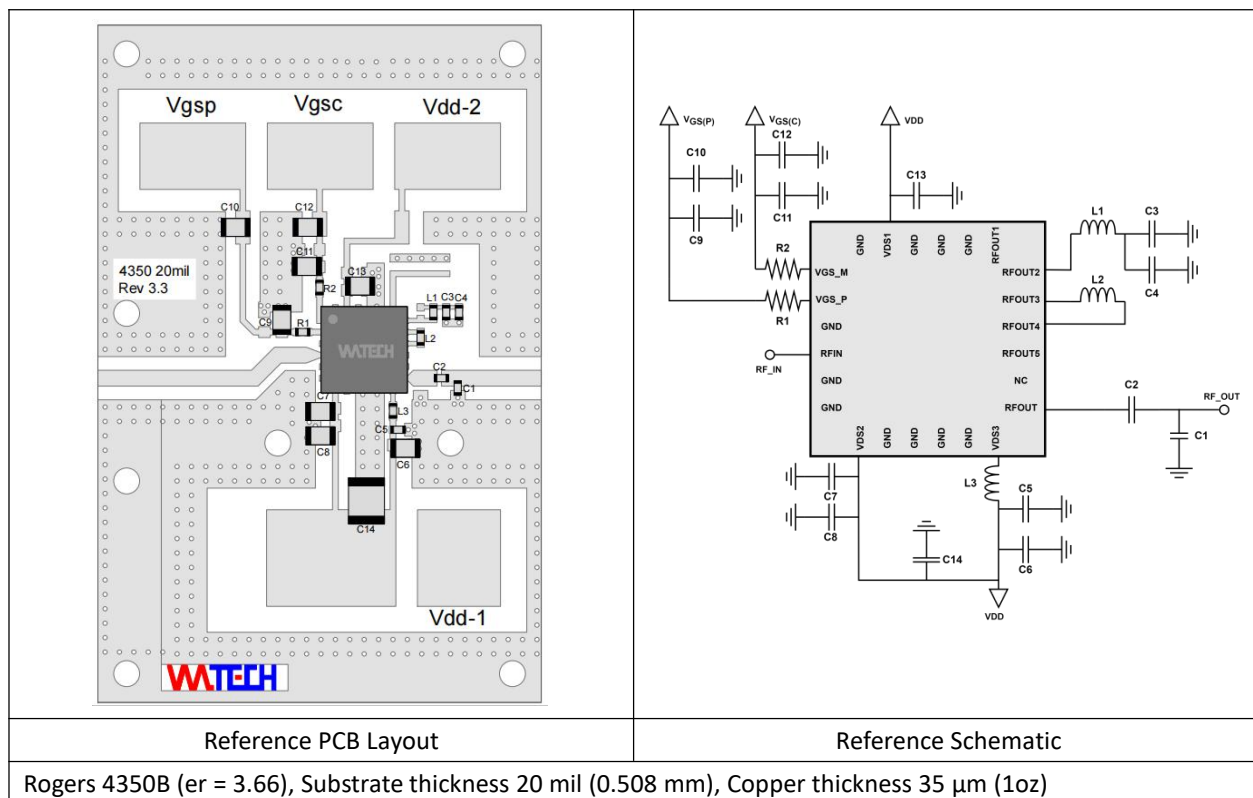
Load Mismatch Test

Condition	Test Result
VSWR=10:1, at all Phase Angles, Vds=+28Vdc, Idq_carr = 27mA, Vgs_peak = Vgs_carr - 0.6 V, Pave = 31 dBm, Frequency = 2.4 GHz, test on WATECH Application Board	Pass

Thermal Information

Parameter	Condition	Value (Typ)	Unit
Thermal Resistance Junction to Case (R _{TH})	T _{CASE} = 90°C, 1C-WCDMA 5MHz Signal, 9.9dB PAR, Pave = 31dBm	8.1	°C /W

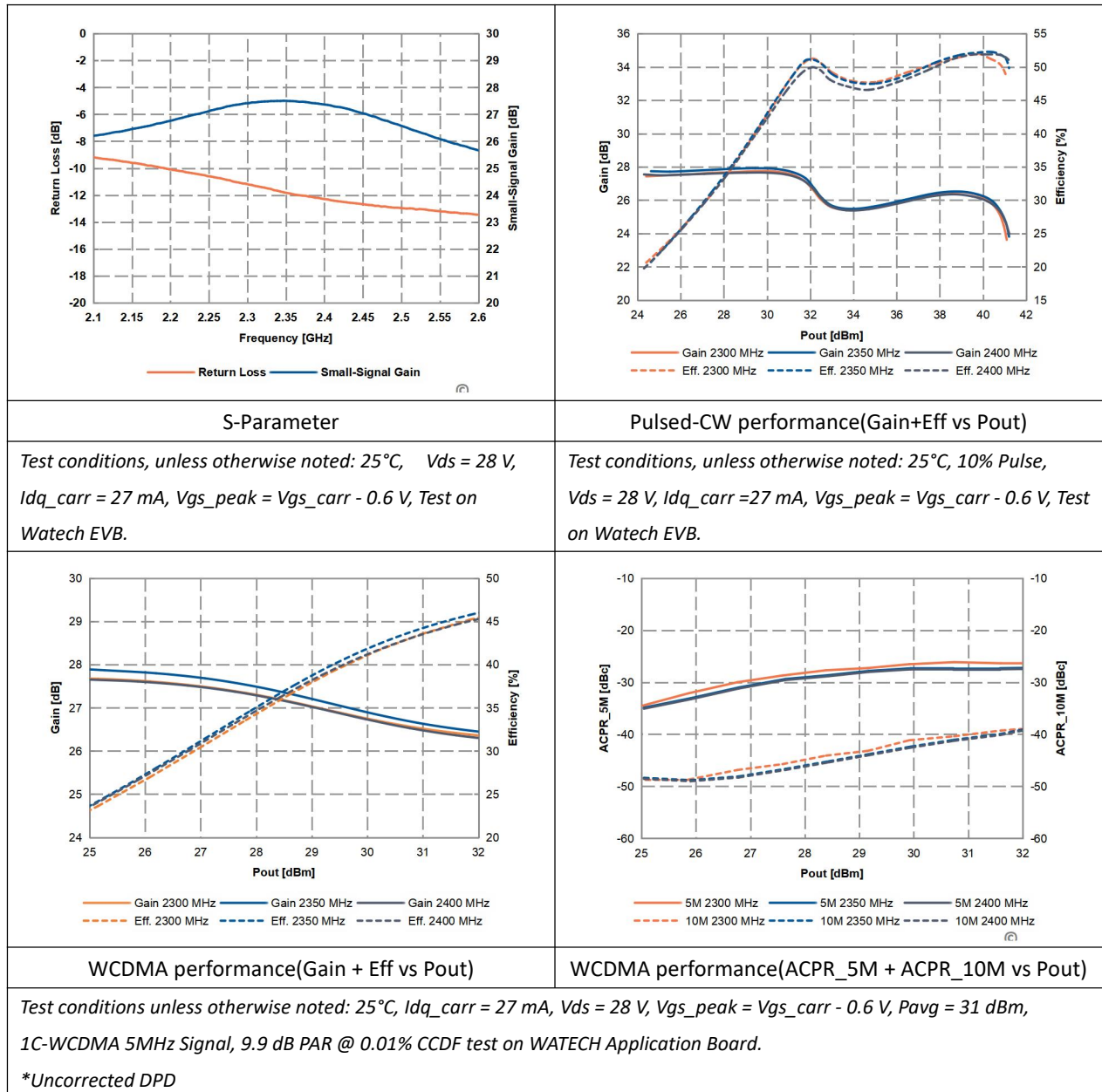
H9G2324M10Q 2.3-2.4 GHz Reference Design



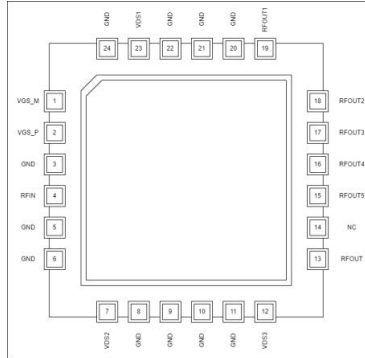
Bill of Materials (BoM) - H9G2324M10Q 2.3-2.4 GHz Reference Design

Component	Type	Value	Description	P/N
C1	Capacitor	0.8pF	Multi-layer ceramic capacitor	GQM1555C2D0R8BB01D
C2	Capacitor	6.2pF	Multi-layer ceramic capacitor	GQM1555C2D6R2BB01D
C3	Capacitor	9.0pF	Multi-layer ceramic capacitor	GQM1555C2D9R0BB01D
C4	Capacitor	100nF	Multi-layer ceramic capacitor	GRM155B31E104KE14
C5	Capacitor	30pF	Multi-layer ceramic capacitor	GQM1555C2D300GB01D
C6 - C13	Capacitor	1 uF	Multi-layer ceramic capacitor	GRM21BC72A105KE01L
C14	Capacitor	10 uF	Multi-layer ceramic capacitor	GRM32EC72A106KE05L
L1	Inductor	5.2nH	HQ inductor	LQW15AN5N2B80D
L2	Inductor	5.4nH	HQ inductor	LQW15AN5N4B80D
L3	Inductor	8.2nH	HQ inductor	LQW15AN8N2B80D
R1, R2	Resistor	0ohm	Resistor	RC0402FR-070RL

Performance Plots



Pin Configuration and Description



Pin Configuration

Pin Number	Label	Description
1	VGS_M	Gate-source voltage of main
2	VGS_P	Gate-source voltage of peak
3	GND	Ground
4	RFin	RF input
5	GND	Ground
6	GND	Ground
7	VDS2	Drain-source voltage of peak driver
8	GND	Ground
9	GND	Ground
10	GND	Ground
11	GND	Ground
12	VDS3	Drain-source voltage of final stage
13	RFout	RF output
14	NC	NOT CONNECTED
15	RFout5	RF output5
16	RFout4	RF output4
17	RFout3	RF output3
18	RFout2	RF output2
19	RFout1	RF output1
20	GND	Ground
21	GND	Ground
22	GND	Ground
23	VDS1	Drain-source voltage of main driver
24	GND	Ground

Package Marking and Dimensions

marking sample ↓

Line1: fixed : Device name

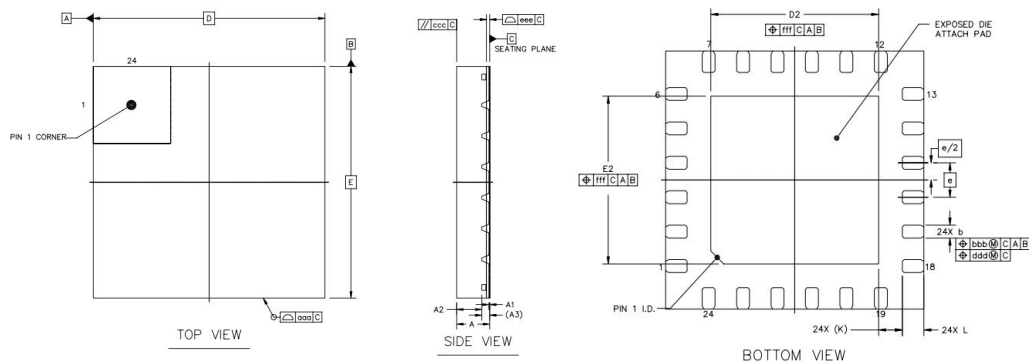
Line2 :unfixed: The last eight digits of Marking Lot No
(Sample:EEYY0001)

Line3 :unfixed: Date Code+ JY

2D Code: Line2+Sub Lot No+Strip No+XXYY(Coordinates on Strip)

●This Marking SPEC only stipulates the content of Marking. For marking requirements such as font and size, please refer to the latest version of "Watech Product Printing Specification".

Marking

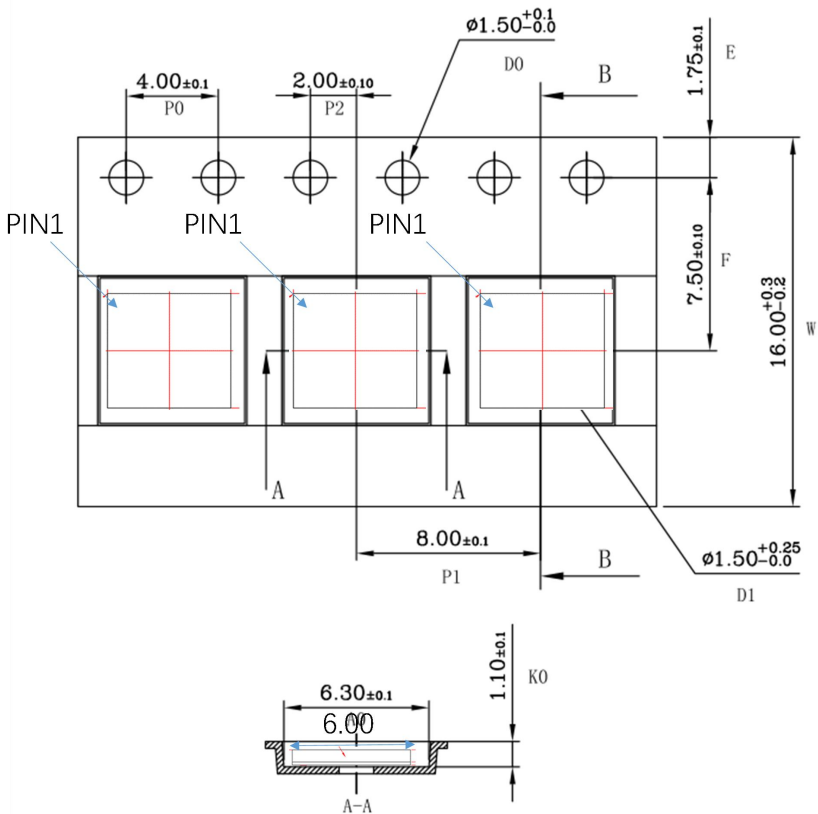


		SYMBOL	MIN	NOM	MAX
TOTAL THICKNESS		A	0.8	0.85	0.9
STAND OFF		A1	0	0.02	0.05
MOLD THICKNESS		A2	---	0.65	---
L/F THICKNESS		A3	0.203 REF		
LEAD WIDTH		b	0.25	0.3	0.35
BODY SIZE	X	D	6 BSC		
	Y	E	6 BSC		
LEAD PITCH		e	0.8 BSC		
EP SIZE	X	D2	3.8	3.9	4
	Y	E2	3.8	3.9	4
LEAD LENGTH		L	0.4	0.5	0.6
LEAD TIP TO EXPOSED PAD EDGE		K	0.55 REF		
PACKAGE EDGE TOLERANCE		aaa	0.1		
MOLD FLATNESS		ccc	0.1		
COPLANARITY		eee	0.08		
LEAD OFFSET		bbb	0.1		
		ddd	0.05		
EXPOSED PAD OFFSET		fff	0.1		

Package Dimensions

Packing Information

Package Type	Reel Size(inch)	Qty/Reel(pcs)	Qty/Box(pcs)	Qty/Carton(pcs)
QFN 6x6x0.85, 24-pins	13	3000	3000	15000



Tape & Reel Packaging Descriptions

Handling Precautions

Parameter	Grade	
Moisture Sensitivity Level MSL	3	
Parameter	Rating	Standard
ESD – Human Body Model (HBM)	Class 1A	JESD22-A114
ESD – Charged Device Model (CDM)	Class C1	JESD22-C101



RoHS Compliance

This product is compliant with the 2011/65/EU RoHS directive (Restrictions on the Use of Certain Hazardous Substances in Electrical and Electronic Equipment), as amended by Directive 2015/863/EU.

Datasheet Status

Document status	Product status	Definition
Objective Datasheet	Design simulation	Product objective specification
Preliminary Datasheet	Customer sample	Engineering samples and first test results
Product Datasheet	Mass production	Final product specification

Abbreviations

Acronym	Definition
LDMOS	Laterally-diffused metal-oxide semiconductor
GaN	Gallium Nitride
CW	Continuous Waveform
VSWR	Voltage Standing Wave Ratio



H9G2324M10Q
10W, 2.3-2.4 GHz Doherty Amplifier
Product Datasheet

Revision History

Document ID	Datasheet status	Release date	Version revision record
Rev 0.1	Preliminary	2023/03	Preliminary Version
Rev 0.1	Product	2023/07	Product Version
Rev 0.2	Product	2024/08	Update format
Rev 0.3	Product	2024/10	Update Reference PCB Layout



H9G2324M10Q

10W, 2.3-2.4 GHz Doherty Amplifier

Product Datasheet

Contact Information

For the latest specifications, additional product information, worldwide sales and distribution locations and information about WATECH:

- Web: www.watechelectronics.com
- Email: MKT@watechelectronics.com

For technical questions and application information:

- Email: MKT@watechelectronics.com

Important Notice

Information in this document is believed to be accurate and reliable. However, WATECH does not give any representations or warranties, expressed or implied, as to the accuracy or completeness of such information and shall have no liability for the consequences of use of such information.

“Typical” parameters are the average values expected by WATECH in large quantities and are provided for information purposes only. All information and specifications contained herein are subject to change without notice and customers should obtain and verify the latest relevant information before placing orders for WATECH products.

The information contained herein or any use of such information does not grant, explicitly or implicitly, to any party any patent rights, licenses, or any other intellectual property rights, whether with regard to such information itself or anything described by such information.

Applications that are described herein for any of these products are for illustrative purposes only. WATECH makes no representation or warranty that such applications will be suitable for the specified use without further testing or modification. Customers are responsible for the design and operation of their applications and products using WATECH products, and WATECH accepts no liability for any assistance with applications or customer product design. It is customer's sole responsibility to determine whether the WATECH product is suitable and fit for the customer's applications and products planned, as well as for the planned application and use of customer's third-party customer(s). Customers should provide appropriate design and operating safeguards to minimize the risks associated with their applications and products.

WATECH products are not designed, authorized or warranted to be suitable for use in life support, life-critical or safety-critical systems or equipment, nor in applications where failure or malfunction of a WATECH product can reasonably be expected to result in personal injury, death or severe property or environmental damage. This document as well as the item(s) described herein may be subject to export control regulations. Export might require a prior authorization from competent authorities.